



Photo by Avery Skees

The Monthly Newsletter of ASPE HAMPTON ROADS



*The Latest From
Hampton Roads*

HAMPTON ROADS CHAPTER:

MEETING TOPIC: Condensate Drainage for Steam Heating & Domestic Water Heating Applications

PRESENTED BY: Dennis Kascur

WHEN: Thursday Sept 14th

WHERE: Clark Nexsen: 4525 Main St, Suite 1400
Virginia Beach, VA 23462

COST: \$20.00



INSIDE THIS ISSUE:

Message from the President	PG 2
Vice President Technical	PG 2
Vice President Membership	PG 5
AYP Liaison	PG 7
WOA	PG 9
Advertise with ASPE Hampton Roads	PG 11
ASPE Mentoring Program	PG 13
What is an Engineer	PG 15/16
Talk Around the Water Cooler	PG 18
Education Station	PG 24



Highland Tank offers a wide variety of plumbing products including:

- automatic grease interceptors
- passive grease interceptors
- manual grease interceptors
- solids interceptors
- oil/water separators
- filtration systems, and more

Contact: Joe Werner | jwerner@highlandtank.com | 919-370-0620

BOARD OF DIRECTORS:

President:
Shane Miller - WSP
Michael.Miller@wsp.com

Vice President Technical:
Ghassan Abu Sultanah - Clark Nexsen
Gassan.AbuSultanah@clarknexsen.com

Vice President Membership:
Joey Adams - Otto Sales
jadams@ottosales.com

Vice President Legislative:
JC Underwood - Nhyates
jcunderwood@nhyates.com

Treasurer:
Administrative Secretary:
Newsletter Editor:
W.O.A.
Lisa Sprague - Clark Nexsen
Lsprague@clarknexsen.com

Chapter Affiliate Liaison / Resource
Enhancement Chairperson:
Troy Monteith - Guardian
tmonteith@gesafety.com

Fund Raising:
Marc Bedois - Mason and Hangar
marc.bedois@masonandhangar.com

AYP:
Jacob Otto - Otto Sales
jacobotto@ottosales.com

Education Chair:
Ryan Schalk - Hickman Ambrose
rschalk@hickmanambrose.com

Web Master:
Pat McNally - Mason and Hangar
pat.mcnally@masonandhangar.com

Rick O'Berry - Ambassador

MESSAGE FROM THE PRESIDENT

Shane Miller

Welcome back everyone! Hope you all had a great summer. We ended last year with our first annual golf outing, and it was a blast. I hope everyone had as much fun as I did. We gave away a lot of cool prizes. George Kaline won the Yeti Cooler. The overall all tournament winners were the team from NHYates congratulations to them. Over the summer we had some Chapter Shirts made up as well that we would like to share with our Chapter members. you do have to be a member of our Chapter to get one of these shirts FREE. However, if you do want a shirt, you can buy one for \$60.00.



VICE PRESIDENT TECHNICAL

Ghassan Abu Sultanah

Flue Gas Vent Materials and Standards
(Centrotherm)

NEXT MONTHS TOPIC:

PRESENTED BY: Dave Raabe

WHEN: Thursday: Oct 12th

WHERE: Clark Nexsen: 4525 Main St, Suite 1400
Virginia Beach, VA 23462

Contact me or any of the board members if you have a topic you would like to learn about or if you have a topic of interest to present.

We are looking for speakers for this years meetings. All months are currently open except for Sept, Oct & Nov. The Nov meeting is an ASPE, ASHRAE & VSHE meeting that will be held in the evening. So please contact me at ghassan.abusultanah@clarknexsen.com or call me at (757) 961-7752 or reach out to Lsprague@clarknexsen.com (757) 961-7862. if you have a presentation you would like to do.

We would like to grow our meeting attendance and make things easier for our members to have as much access to the Chapter as possible. So, we would like to offer a virtual meeting to our members who have offices outside the Virginia Beach Area or find it tough to drive to Town Center for a meeting. Please just let Lisa Sprague know if you would like to attend the virtual option.



Kemper Multi-Therm® thermostatic balancing valves have been trusted for over 25 years. Packed with unique and innovative features, these compact thermostatic balancing valves offer unparalleled ingenuity, dependability, and trustworthiness.

Thermal Disinfection

Ability to manage high temperature disinfection practice is included.

Thermal balancing cartridge

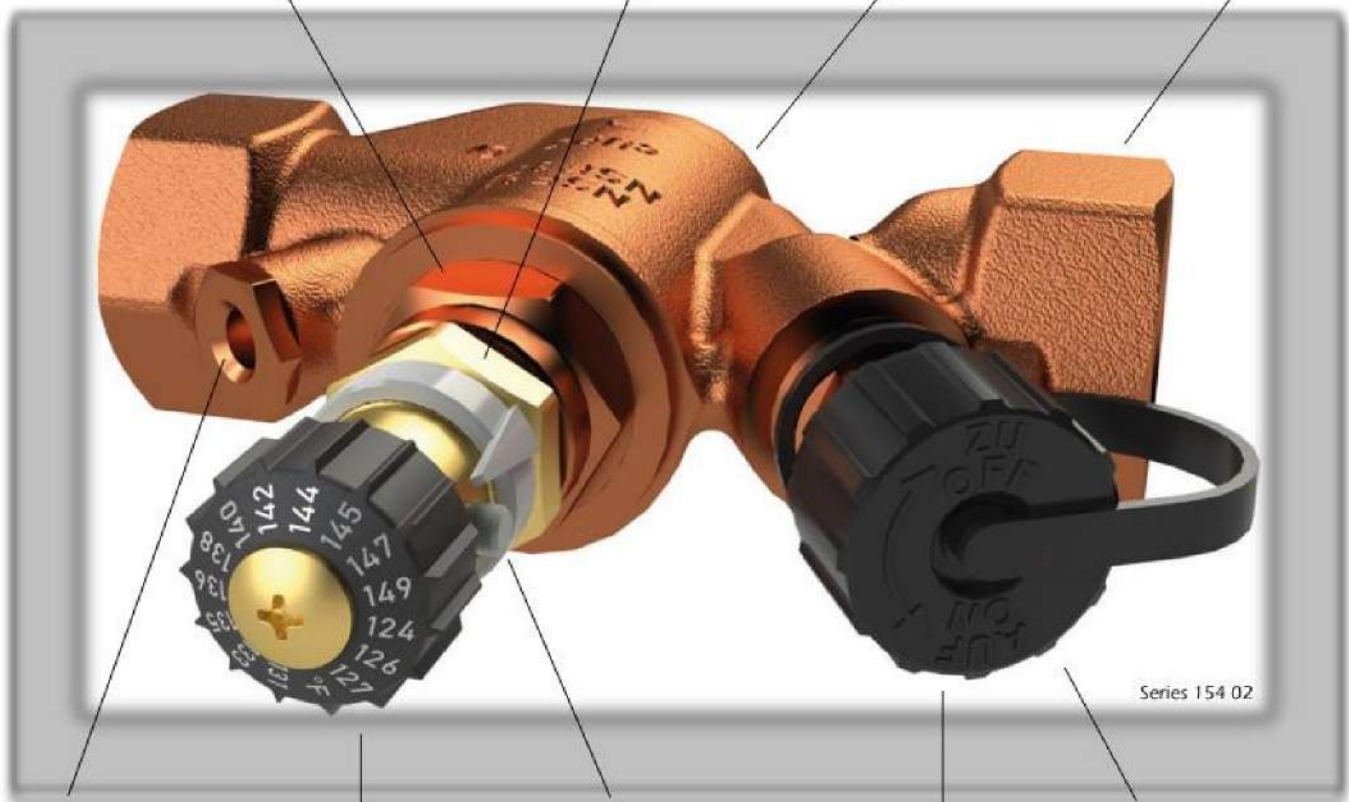
Replaceable or serviceable while valve body remains connected to piping.

Bronze valve body

Dezincified, lead free

Insulation clam shell

Option for quick & tidy installation.



Available port

This port can be used for a BMS temperature sensor probe.

Locking dial

Set screw locks in the temperature setting hidden under a protective cap.

Built in isolation valve

This feature stops the flow of water through the valve.

Adjustable temperature dial

This feature provides flexibility and allows for real-time adjustments to the HW return temperature setting.

Integrated port

This port allows for the use of an optional temperature gage (display range 0 -176°F).

Contact for more information:

• www.OttoSales.com • (804) 798-2600

KEMPER
WATER CONTROL SYSTEMS



VICE PRESIDENT MEMBERSHIP

Joey Adams

SEPT NEW MEMBERS

SEPT MEMBERS

Dimori Rodriguez
Jason Haigh
Joey Adams
Michael Pearce
Miguel Ochoa
Patrick McNally



Thank you to each and every member who encouraged a colleague to join the Hampton Roads ASPE Chapter this year. We had some growth and I am excited to continue and build on that growth in the 2022-2023 season! Be on the lookout for membership drive events in the Fall!

To continue our growth in the Chapter we would like to create this incentive. For every member that you get to join the Chapter you will earn a prize. For instance 1-2 members gets you an ASPE HR tumbler 3-4 gets you the tumbler and a HR t-shirt and for 5 or more you get the tumbler, HR T-shirt & padded folio. So please start getting your co-workers to sign up for the Chapter



Photo by Clark Nexsen



EVERY SYSTEM



- Wet Flow Tested to Design Conditions—Guaranteed Performance
- ASPE Recognized 70% Redundancy for Energy Savings
- No-Flow shut down without the use of Hydropneumatic Tanks
- Standard with surge suppressor and 100k AIC SCCR disconnect



(804) 798-2600

AYP LIAISON

Jacob Otto

**ASPE
YOUNG
PROFESSIONALS®**

**ASPE
YOUNG
PROFESSIONALS®**

Hey!

**Learn more
about our group!**





WATER TEMPERATURE SOLUTIONS START WITH LEONARD

-  Self-balancing
-  Daily self-cleaning feature
-  ± 2 °F temperature accuracy
-  Integral check valves available
-  Flow rates ideal for small to mid-sized design projects
-  Self-diagnostic
-  Digital electronic control with 2-line LCD display
-  Programmable temperature setpoint
-  Easy setup/easy error coding
-  Upon power failure, holds last set temperature to avoid thermal shock

PROTON SERIES: MODEL FEATURES GUIDE

	Proton 1.0	Proton 2.0	Proton 2.5	Proton 3.0
Simple and intuitive user commissioning and setup	•	•	•	•
Alarms for when unit maintenance is required	•	•	•	•
User programmable set point range between 65 °F and 180 °F	•	•	•	•
Automatic hot/cold water shutoff upon cold/hot water inlet supply failure	•	•	•	•
Valve controls at time of no use: 0.0 GPM*	•	•	•	•
Single valves available in 1" to 3" valve outlet sizes	•	•	•	•
Manifold assemblies available in up to 6" valve outlet sizes	•	•	•	•
Enhanced controller with programmable disinfection mode		•	•	•
Three additional temperature probes (inlet hot, inlet cold, return temp.)		+	+	•
Five relay contacts that switch on during alarm states		+	+	+
Remote alerts to assist Maintenance and Service Personnel		+	+	+
Loss of power alert		+	+	+
Broken temperature probe alert		+	+	+
"Out of range" temperature alert (± 10 °F)		+	+	+
Motor connectivity and operation alert		+	+	+
Service required @90% full shuttle movement alert		+	+	+
Enhanced controller with BACnet MS/TP connection			•	•
Enhanced controller with Wi-Fi				•



*When properly installed near the hot water source with a continuously operating recirculation pump

• Standard
+ Optional

AVAILABLE FOR IMMEDIATE SHIPMENT FROM CLINTON, MD
(301) 877-2300




Women of ASPE®



Women of ASPE®

Learn more about our group!

[Email rrodriguez@aspe.org](mailto:rrodriguez@aspe.org) and visit aspe.org



Exclusive WOA Sponsor
DELTA
COMMERCIAL



MPB=2022=USA
SPECIFICATION
DRAINAGE
(LIT-067)



CLPB=2022
LIGHT COMMERCIAL
PRODUCTS
(LIT-048)



AD=2022=USA
ACCESS DOORS
(LIT-043)



BEECO=2022
BACKFLOW PREVENTERS
AND ACCESSORIES
(LIT-071)



NH=2022=06
NO HUB COUPLINGS
(LIT-044)



TDPC=2023
POLYMER CONCRETE
TRENCH DRAINS
(LIT-076)



TD=2023
GRP & STEEL
TRENCH DRAINS
(LIT-046)



TDSD=2023
SHOWER DRAINS
(LIT-077)



TDSS=2023
STAINLESS STEEL
TRENCH DRAINS
(LIT-072)



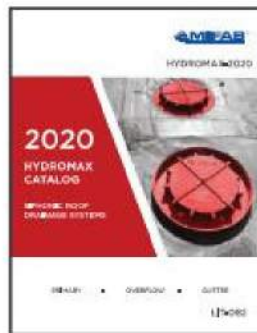
ROOFGUARD=2020
ROOFGUARD ROOF
DOMES
(LIT-058)



C-PORT=2023
ROOFTOP RUBBER
SUPPORTS
(LIT-047)



DB=2022
DIALYSIS BOXES
(LIT-070)



HYDROMAX=2020
SIPHONIC DRAINAGE
(LIT-062)



INT=2023
INTERCEPTORS & ACID
NEUTRALIZATION TANKS
(LIT-095)



TSP=2022=08
TRAP SEAL
PRIMERS
(LIT-062)



ADVERTISE WITH YOUR LOCAL CHAPTER

A SPECIAL THANK YOU TO EVERYONE WHO HAS PLACED ADS THIS SEASON.

NEWSLETTER AND WEBPAGE ADVERTISEMENT COSTS

FULL PAGE NEWSLETTER (PER SEASON)

ASPE MEMBER \$375.00

NON-ASPE MEMBER \$450.00

HALF PAGE NEWSLETTER (PER SEASON)

ASPE MEMBER \$275.00

NON-ASPE MEMBER \$350.00

BUSINESS CARD NEWSLETTER (PER SEASON)

ASPE MEMBER \$75.00

NON-ASPE MEMBER \$150.00

TABLETOP COSTS

TABLETOPS - PER MEETING

ASPE MEMBER \$80.00

NON-ASPE MEMBER \$100.00

TABLETOPS - YEARLY (SEPT THRU MAY)

ASPE MEMBER \$450.00

NON-ASPE MEMBER \$550.00

Advertising

Thank You!

ADVERTISING



OMNI SERIES
Heat Pump Water Heaters

TO LEARN MORE CONTACT

Eric Geisendaffer: Bay Associates

ERIC@BAYASSOCIATES.COM



PBX

Fully integrated heat pump with 40-119 gallon capacity

HHP SYSTEM

Fully configurable heat pump system with 120-5000 gallon storage capacity and fully programmable controller



HUBBELLHEATERS.COM



MANUFACTURING CO., INC.

Experience Ease of Installation, Integration, and Control with Lawler's Fully Electronic Mixing Valve, Neptune!

Neptune EMX Electronic Mixing Valve

- Accurate control of domestic hot water in all flow conditions
- Simple 3 button interface
- High temperature alarm
- Two valve installation in parallel with one controller
- ModBus communication standard
- Rugged lead-free stainless-steel valves
- ASSE 1017 and NSF 372 listed



NEPTUNE

Neptune EMX Electronic Mixing Valve Manifold Systems for Recirculation

- Plug-and-play
- Pre-assembled / tested
- Standard and custom designs

Contact your local rep, Eric Geisendaffer at Bay Associates (Eric@Bayassociates.com), or visit www.temperedwater.com to learn more.

ASPE Mentoring Program



ASPE Mentoring Program

Connecting **ASPE members** who have a particular skill set with others who want to acquire the same skills to achieve their personal and professional goals.

Become a mentor or mentee today!

To learn more, visit
connect.aspe.org

Aegis[®] Eco-Friendly CO₂ Heat Pump Water Heaters



The Cleaner
Way to Heat

 **Lync**[®]
by **WATTS**

817.335.9531 | lynccbywatts.com/aegis



1432 Front Ave | Lutherville, MD 21093
410-825-6616 | bayassociates.com | Eric@Bayassociates.com

Ultra-reliable Electric and Gas-Fired Water Heaters



Industry's Best
Warranties

AquaPLEX[®]
Engineered Duplex Alloy

 **PVI**[®]
A **WATTS** Brand

800.784.8326 | pvi.com



1432 Front Ave | Lutherville, MD 21093
410-825-6616 | bayassociates.com | Eric@Bayassociates.com

WHAT IS A Plumbing Engineer?

PLUMBING ENGINEERS are a vital part of design/build construction teams for residential, commercial, and industrial facilities. They interact with other construction trades to provide building owners with efficient, functional, and sustainable plumbing systems that protect the health, welfare, and safety of the public and prevent environmental contamination.

WHAT DO PLUMBING ENGINEERS DO?

PLUMBING ENGINEERS use the principles of fluid flow along with engineering calculations to design plumbing systems that transport fluids and gases throughout buildings. Those systems include:

$$S = \frac{rpm\sqrt{Q}}{NPSH^{0.75}}$$
$$x 2.31 - h_f + \frac{(P_a - P_v)}{\text{Specific gravity}}$$



Domestic water systems



Wastewater



Fuel gas



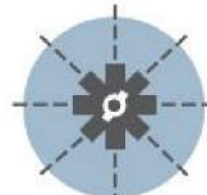
Medical gas & vacuum



Compressed air



High-purity water



Fire suppression



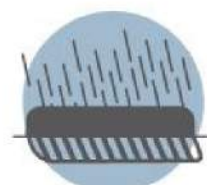
Chemical waste



Rain & stormwater systems



Venting



Site & building drainage



Water efficiency

WHAT DOES THE PROFESSION ENTAIL?

"The old adage that 'anyone can do plumbing' does not hold water anymore. A diversified and accomplished plumbing engineer is a valuable commodity in the design/build market."



PLUMBING ENGINEERS are highly skilled individuals involved in many different aspects of the design/build process, including:

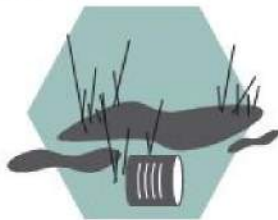
PLUMBING SYSTEM DESIGN	COMMISSIONING
PROJECT MANAGEMENT	CODE & STANDARD EXPERTISE
CONSTRUCTION ADMINISTRATION	FORENSIC & SUBSURFACE SYSTEM EVALUATION
BUILDING INFORMATION MODELING (REVIT)	COST ESTIMATION
PRODUCT & SYSTEM SPECIFICATION	PROBLEM SOLVING

PROTECTING PEOPLE & THE ENVIRONMENT

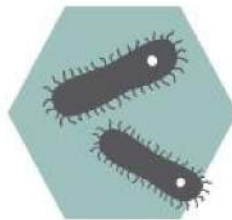
PLUMBING ENGINEERS help eliminate many of the threats that sicken people and harm the environment on a global scale by:



Delivering safe drinking water & sanitation systems



Combating groundwater contamination & depletion

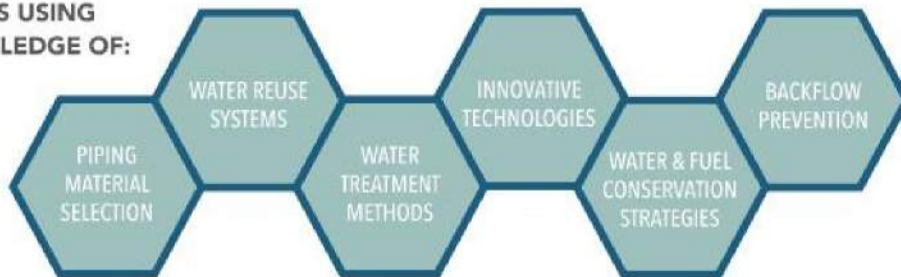


Preventing waterborne diseases



"Through their designs, plumbing engineers affect every life."

THEY DO THIS USING THEIR KNOWLEDGE OF:



HOW TO LEARN MORE

The American Society of Plumbing Engineers (ASPE) is the only association dedicated to promoting the plumbing engineering profession and helping plumbing engineers advance in their careers. Our members have a wealth of knowledge and experience and are ready to help others learn more about the industry.



To discover ASPE and find local contacts, visit:

aspe.org



Connect with Us





DURAGUARD® PRODUCT LINE



Public health and safety are a common concern. Targeted for commercial applications, Bemis has a comprehensive offering of seats with DuraGuard® Antimicrobial Built-In Seat Protection™ and STAY·TITE™.

WHAT IS DURAGUARD?

DuraGuard is an antimicrobial property built into the toilet seat to inhibit the growth of bacteria. The active ingredient in DuraGuard is zinc pyrithione, a non-VOC (volatile organic compound), broad-spectrum, highly effective antimicrobial agent used to control mold, mildew, yeasts, fungi, algae, gram positive and negative bacteria. DuraGuard does not protect users or others against bacteria, viruses, germs, or other disease-causing organisms.

WHAT IS STAY·TITE?

STAY·TITE Seat Fastening System™ anchors the toilet seat to the bowl by using a patented bolt design with a inned bushing and glass-illed nylon nut, eliminating the need to retighten the seat to the bowl after installation.

CYDNEY JOHNSTONE

The Joyce Agency

Cell: 804-240-8014

Email: cydney@thejoyceagency.com

OFFICE



HOSPITALITY



SCHOOLS



HEALTHCARE



TALK AROUND THE WATER COOLER

Check-out these sites for interesting and educational topics & tools so you can stay in 'the know'!



ASPE PIPELINE

Some recent excerpts:

September 2023 From the President's Keyboard: A Tale of Two Members

He had already been awake when his phone started blaring on the nightstand. A reflexive swipe of the screen silenced the irritating noise. There was no telling how long he had been awake. He was troubled when he went to bed, and the same issue prevented any possibility of meaningful sleep. The directive had come down to him from a "higher up." It was something he had never considered doing before. With his toothbrush in hand, he checked himself in the mirror. He asked himself, "When the time comes, can I really pull the trigger?".....[More](#)

Hazen-Williams and Darcy-Weisbach Equations: Similarities and Differences

The Hazen-Williams and Darcy-Weisbach equations are both used to calculate head loss due to friction in fluid flow. The Hazen-Williams equation is commonly used for water flow through pipes, while the Darcy-Weisbach equation is a more versatile and accurate method for calculating head loss due to friction in fluid flow.....[More](#)

September 2023 Professional Engineer's Perspective: Why Has the Profession Allowed Various Interests to Produce Differing Model Codes?

It is interesting to note that engineering principles are based on science, physics, and mathematics. Regardless of where they are applied, these engineering principles remain unchanged—so why do the plumbing codes differ in their application of these principles? While codes must address various climatic conditions, the underlying principles remain the same regardless of the jurisdiction in which they are applied, so you would expect there to be one recognized set of codes to cover all aspects of a construction discipline....[More](#)



POWERS INNOVATIONS

DIGITAL MIXING SOLUTIONS ENABLE THE SAFE, EFFICIENT DELIVERY OF HOT WATER IN COMMERCIAL AND INSTITUTIONAL FACILITIES. BOTH PRODUCTS HAVE THE SAME FUNCTIONALITY BUT AT DIFFERENT FLOW CAPACITIES AND HELP TO PREVENT SCALDING WHILE SAVING ENERGY.



INTELLISTATION®

The IntelliStation®, with its large-capacity valves, is designed for use in hospitals, universities, and large hotels. The digital water mixing and recirculation solution can be integrated into a building automation system (BAS) to allow facilities managers to remotely monitor and control water temperatures. Help mitigate Legionella and other waterborne pathogens with the high-temperature sanitization mode. Key capabilities include a digital temperature regulation within $\pm 2^{\circ}\text{F}$ to ASSE 1017, even during low and zero demand periods, and is field configurable without the need for a laptop or special software.



INTELLISTATION® JR

IntelliStation® Jr. provides safe hot water consistently and on-demand for smaller applications than IntelliStation. It is also ASSE 1017 compliant, available in 3/4" through 2" sizes, and has a programmable temperature set-back/scheduling program that lowers water temperature when the building is unoccupied. Register the Jr. with the Watts OnSite mobile or web app for remote temperature control, monitoring, and visibility across locations and sublocations.

Scan the QR Code below to access the Selexit Configuration Tool.



CYDNEY JOHNSTONE: 804-240-8014
CYDNEY@THEJOYCEAGENCY.COM
WWW.THEJOYCEAGENCY.COM



POWERS™
 A WATTS Brand

IS YOUR WATER SYSTEM READY?

Represented by
YATES
SINCE 1949

Contact:
1.800.878.8181
jcunderwood@nyates.com
info@nyates.com

MULTI-BARRIER BACTERIAL SOLUTIONS



- 99.999% removal of Legionella and pathogens
- A firewall for the entire building
- Drastic reductions in nutrients and biofilms
- 500 GPM+, minimal pressure loss
- Self-cleaning, long-lasting, low maintenance
- Automatic membrane integrity verification

Removing microorganisms *before* they enter and improving disinfectant efficacy.

HIGH-CAPACITY ULTRAFILTRATION



- Point-of-Entry
- Point-of-Use
- Recirculation
- Supplemental Disinfectants



PROTECT YOUR FACILITY AND LEARN MORE AT WATERCONTROLINC.COM

© Water Control Corporation 01/21

HEADQUARTERS & WAREHOUSE

10915 McCormick Rd, Hunt Valley, MD 21031

Phone – 800.878.8181 | Fax – 888.667.9201



YATES

SINCE 1949

- A.O. Smith Water Heaters
- Colmac Heat Pump Water Heaters
- Holby Valves
- Taco™ 006e3 Circulators



PLEASE VISIT NYATES.COM FOR MORE INFORMATION.

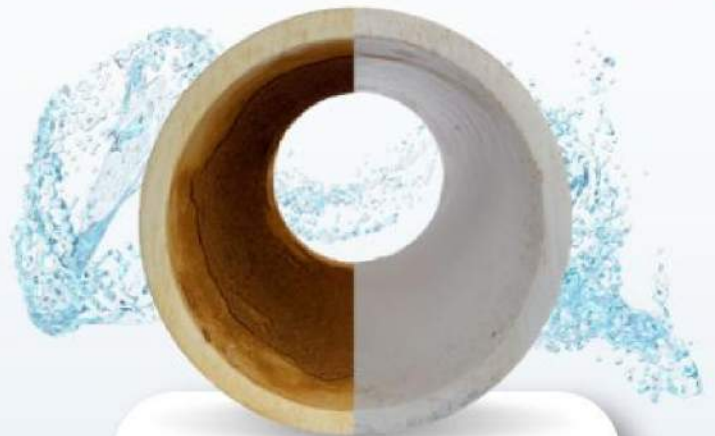
A DIRTY SYSTEM IS COSTLY

Save up to **35%**
on energy and
maintenance costs.

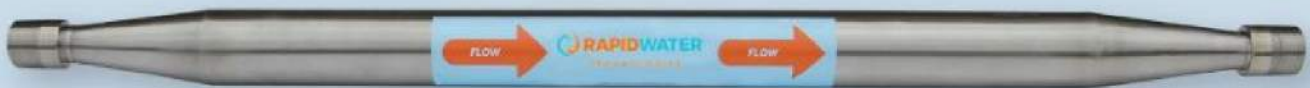
Ask us how.

Nanobubble Generators from Rapid Water Technologies remove and prevent the buildup of biofilm and other deposits in commercial and industrial water use.

- ✓ Heat Transfer Efficiency
- ✓ Chemical Use
- ✓ Equipment Maintenance
- ✓ System Cleaning & Repair
- ✓ Increased Production
- ✓ Water Use
- ✓ Sanitation
(Legionella, Salmonella, COVID-19, etc.)



**Start saving
today!**



MERLO
ENERGY

A MEMBER OF THE KENDALL GROUP

800-362-4994

sales@merloenergy.com

CHARLOTTE

PIPE AND FOUNDRY COMPANY



Z100 FLO FORCE

A first of its kind

- ✓ Parabolic Design
- ✓ Updated Dome Design
- ✓ Redesigned Gravel Guard

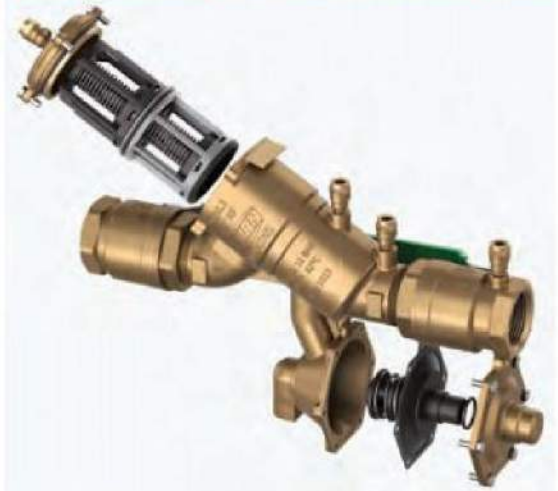


rmi

Richmond Marketing Inc



ZURN WILKINS 975XL3 SERIES



Richmond
2533 Mechanicsville Tpke
Richmond, VA 23223

Alexandria
4750 Eisenhower Ave, Suite
Alexandria, VA 22304

O 804-643-7355
www.rmisaless.com
rmisaless@rmisaless.com

REDUCES:

- LEAD
- SEDIMENT
- PARTICULATES
- CHLORINE TASTE AND ODOR
- CYSTS



LASTS
2X
LONGER

WATERSENTRY® FILTER 51600C
High-capacity Replacement Filter for Elkay Enhanced ezH2O® Bottle Filling Stations
Tested and certified to NSF/ANSI 42 and 53, our 6,000-gallon filter reduces chlorine and odor, as well as contaminants, such as lead, cysts and particulates. The result is healthier, better-tasting drinking water.

ELKAY



BRADFORD WHITE WATER HEATERS & BOILERS

Every Solution For Any Demand

At Bradford White, we deliver the solutions you need to meet the needs of your customers. Our products are all built with quality and engineered for outstanding efficiency and performance.

We offer tank and tankless water heaters, heat pump water heaters, boilers, as well as specialty tanks and pressure vessels.

On every job, you'll get 24/7 technical support from our team to make sure the product you spec works perfectly for your customer's needs. On every job, our business is being there for your business. Scan the QR code below for our RightSpec Sizing Tools.

The
JOYCE AGENCY
MANUFACTURERS REPRESENTATIVE

3933 Avion Park Court • Chantilly, VA 20151

Phone: 800-291-9298 • thejoyceagency.com

Matt Morris: mmorris@thejoyceagency.com



Built to be the Best®

©2023, Bradford White Corporation. All rights reserved.

BRADFORD WHITE
WATER HEATERS

www.bradfordwhite.com

EDUCATION STATION

Ryan Schalk

If you are looking to earn the required CEU's and/or enhance your skills and knowledge then this is the site for you! Once you've landed on Educational Program & Tools page, simply point & click to gain access to a variety of ways to accomplish your goals.

<https://www.aspe.org/pipeline/category/education-opportunities/>

PPI Announces New Potable Water Service Online Course

The Plastics Pipe Institute's newest online course, "PEX Tubing for Water Service Line Applications," is now available on its PPI eLearn channel. This online learning course provides a self-directed learning opportunity for professionals in the plumbing and underground infrastructure industries. CEU credit will be awarded to those completing the ASPE-accredited course. PPI is the nonprofit North American trade association representing the plastic pipe industry.....[More](#)

Watts to Host ASPE-Accredited Webinar on Commercial Leak Defense

Having a reliable leak detection system is critical to keep your building running. You can mitigate the risks associated with water damage—a potential threat that can have catastrophic consequences—by incorporating cutting-edge leak detection strategies into your design.....[More](#)

Learn 10 Things to Know About DHW Return Design at the Next Coffee with Caleffi

Domestic hot water (DHW) design is critical to optimize energy efficiency, while reducing water waste. On Thursday, September 21, at noon CDT, guest host Christoph Lohr, PE, will detail the policies, standards, and credentials that can help designers and installers navigate the waters.....[More](#)