

CASPE

American Society of
Plumbing Engineers™

HAMPTON ROADS



Photo by Avery Sikes

The Monthly Newsletter of ASPE HAMPTON ROADS



The Latest From
Hampton Roads

HAMPTON ROADS CHAPTER:

MEETING TOPIC: Specifying Emergency Showers & Eyewashes

PRESENTED BY: Troy Montieth - Guardian Equipment

WHEN: Thursday: Mar 9th

WHERE: Clark Nexsen: 4525 Main St, Suite 1400
Virginia Beach, VA 23462

COST: \$20.00



INSIDE THIS ISSUE:

Message from the President	PG 2
Vice President Technical	PG 2
Vice President Membership	PG 6
AYP Liaison	PG 8
Vice President Legislative	PG 10
WOA	PG 12
Affiliates Corner	PG 14
Advertise with ASPE Hampton Roads	PG 16
What is a ASPE Connect	PG 18
ASPE Get Connected	PG 20
ASPE Mentoring Program	PG 22
Talk Around the Water Cooler	PG 23
Education Station	PG 24



BOARD OF DIRECTORS:

President:
Shane Miller - WSP
Michael.Miller@wsp.com

Vice President Technical:
Ghassan Abu Sultanah - Clark Nexsen
Gassan.AbuSultanah@clarknexsen.com

Vice President Membership:
Joey Adams - Otto Sales
jadams@ottosales.com

Vice President Legislative:
Marc Bedois - EYP
M.Bedois@y2hoo.com

Treasurer:
Administrative Secretary:
Newsletter Editor:
Web Administrator:
Lisa Sprague - Clark Nexsen
Lsprague@clarknexsen.com

Chapter Affiliate Liaison / Resource
Enhancement Chairperson:
Pat McNally - Mason & Hanger
pat.mcnelly@masonandhanger.com

MESSAGE FROM THE PRESIDENT

Shane Miller

Once again, we had a good turnout for our February meeting. Timothy Schroeder did a fantastic presentation. Our First annual golf outing looks to be shaping up and will be May 19th of this year. We have 5 teams that have entered so far. The attached flyer below has all the information about the golf outing. If you have any questions about the Golf Outing, please reach out to one of our board members for more details. It will be a fun time, so please start putting your teams together. I am also putting a t-shirt order together. However, I would like to put a plumbing saying on the back of the shirt. So, to make it interesting I am turning it into a contest. The person to come up with the slogan or a logo for the back of the shirt will get a prize plus the t-shirt free. I would like the slogan or logo to clean seeing how we are representing ASPE. So please email me your suggestions Lsprague@clarknexsen.com. We are still looking for Tabletops, Presenters and Newsletter /Website sponsors for this year as well as next year. So please reach out to Lisa Sprague if you would like to be a part of any of these. Lsprague@clarknexsen.com (757) 961-7862. We have a new addition to our Chapter and would like to welcome Charles Austin to the Chapter. We would like to hear any ideas you all may have for any type of outings or Presentations you might want to hear. This is our Chapter, and we want to make it the best as it can be. So, reach out to any of the Board members with any of your ideas. We are here for you. Also please reach out to your fellow co-workers and have them sign up for the Chapter if they haven't already. ASPE is a great tool for learning about plumbing design. I would also like to put it out there is anyone is interested in becoming a board member we have open positions available. Newsletter editor is available.

VICE PRESIDENT TECHNICAL

Ghassan Abu Sultanah

NEXT MONTHS TOPIC: Indirect Fired Domestic Water Heaters for Commercial, Institutional & Industrial Application

PRESENTED BY: ASHRAE/ ASPE meeting - Miguel Ochoa

WHEN: Thursday - Apr 11th

WHERE: Clark Nexsen: 4525 Main St, Suite 1400
Virginia Beach, VA 23462

Contact me or any of the board members if you have a topic you would like to learn about or if you have a topic of interest to present.

We are looking for speakers for this years meetings. All months are currently open except for Sept, Oct & Nov. The Nov meeting is an ASPE, ASHRAE & VSHE meeting that will be held in the evening. So please contact me at ghassan.abusultanah@clarknexsen.com or call me at (757) 961-7752 or reach out to Lsprague@clarknexsen.com (757) 961-7862, if you have a presentation you would like to do.

We would like to grow our meeting attendance and make things easier for our members to have as much access to the Chapter as possible. So we would like to offer a virtual meeting to our members who have offices outside the Virginia Beach Area or find it tough to drive to Town Center for a meeting. Please just let Lisa Sprague know if you would like to attend the virtual option. However, attending the virtual meetings you will receive an ASPE T-shirt. You must attend 8 of 10 of the meetings to be eligible. It is easier to attend virtual meetings than the in person ones. Also to attend the virtual meeting there is a catch you must be a **ASPE HAMPTON ROADS MEMBER**.

Friday May 19th 2023

Hampton Roads ASPE Golf Outing



Riverfront Golf Club

5200 River Club Drive
Suffolk, Virginia 23435
(757) 484-2200
riverfrontgolf.com

Friday, May 19th 2023

\$340 per team of 4
\$85 per individual

Registration: 11:15 AM
Tee off: 12:30 PM
Awards: 5:30 PM

Enjoy 18 holes of golf including cart, lunch, drinks on the course, and much more!

ALSO:

- Putting contest
- 2 longest drive awards

DON'T FORGET:

- Awesome Raffle Prizes
- 50/50 Cash Raffle
- Sponsorship Opportunities!

1st Annual GOLF OUTING FUNDRAISER



The Hampton Roads ASPE Chapter is organizing its first annual golf tournament to raise funds for our chapter. It will be held on Friday, May 19th 2023 at Riverfront Golf Club at 11:15 a.m. and we invite all of you to join us for a day of fun.

We hope the outing will become a tradition for the Chapter and that the proceeds allow us to continue funding the chapter activities. Our first annual event is open to all members, vendors, reps and manufacturers to spend time together for socializing and networking. Please consider participating or providing sponsorship of a hole, beverage cart, etc.

The beautiful Riverfront Golf Club is located minutes from Downtown Norfolk, Newport News, Portsmouth, Chesapeake and Hampton. This course is sure to deliver an unforgettable experience for both the novice and the advanced golfer.



Hampton Roads ASPE CHAPTER 2023 GOLF OUTING REGISTRATION FORM

DATE: Friday May 19th 2023

TIME: Registration at 11:15 AM.

PLACE: Riverfront Golf Club
5200 River Club Drive
Suffolk, Virginia 23435
(757) 484-2200

ENTRY FEE: **\$340.00** (includes green fees, cart, lunch, and drinks on course for 4 players)

\$85.00 (includes green fees, cart, lunch, and drinks on course for 1 player)

\$25.00 (lunch only)

Payment due April 14 2023

Rules: **Format:** Tournament will be played Captain's Choice with 4-person teams.

Rule sheets will be posted in each cart and will be reviewed by the Pro on outing day.

TEAM/INDIVIDUAL ENTRY FORM:

TEAM NAME: _____

PLAYER
NAME(S): _____

COMPANY: _____

ADDRESS: _____

TELEPHONE: _____

EMAIL: _____

Mail Form and Check to:

(checks payable to ASPE Hampton Roads Chapter)

Clark Nexsen

c/o Lisa Sprague

4525 Main Street Suite 1400

Virginia Beach, VA 23462

email: lsprague@clarknexsen.com

cc email: jadams@ottosales.com

SPONSORSHIP FORM:

Level specific sponsorship benefits are explained below.

Sponsor are responsible for their own signage.

LIST SPONSORSHIPS HERE:

A. HOLE AND TEAM SPONSOR* (\$500) **GREAT VALUE!**

B. HOLE SPONSOR (\$200)

C. BEVERAGE CART SPONSOR (\$250)

D. LUNCH SPONSOR (\$350)

E. DRIVING RANGE SPONSOR (\$200)

F. PUTTING CONTEST SPONSOR (\$200)

G. Toilet Repair Kits (\$10 per player)

Sponsor and Level (A-G) Donation

1 _____

2 _____

3 _____

4 _____

5 _____

6 _____

7 _____


Subtotal _____

Team/Individual fee (\$340/\$85 if not included in sponsorship) _____

Lunch only (\$25 per person) _____

GRAND TOTAL due by April 14, 2023 _____

"Toilet Repair Kits" include 2-Mulligans (which can be used on any shot, not on the green), 1-Tee Buster (Men may drive from the Ladies Tee on any hole, except for the longest drive or closest-to-pin holes; Ladies & Juniors may use as a Mulligan from any Tee, except for the longest drive or closest-to-pin holes), 1-Throw (under or over hand, can be used for any shot, does not count as a stroke) & 3 feet of string (to be used on the green. If your birdie putt is 3 feet short, use the 3 feet of string and the birdie counts. If your birdie putt is 3 inches short, cut 3 inches from your string and the birdie counts, and then you still have 2 feet 9 inches of



Viega, LLC

Lunch & Learn sessions, project support, specification review

Learn more about the advantage of Viega's innovative piping systems. MegaPress®, MegaPress Stainless, MegaPress CuNi, SeaPress and ProPress® systems are suitable for virtually any type of project. Consider any of Viega's products for new or retrofit construction.

In addition to comprehensive product assistance, our sales force offers more to make your project successful. Benefits offered at no charge include general or specialized training, product demonstrations and Lunch & Learn sessions.

- More than 1,300 press fitting choices in multiple materials including copper, stainless, carbon steel and PEX
- Most press connections are secure and finished in seven seconds or less
- Save 60-90% on installation time as compared to other traditional pipe joining methods
- More approved applications than any other press fitting system
- System-matched tools and jaws provide a consistent connection every time



For Lunch & Learns or more information, contact:

Mike McCarthy | Technical Manager
Mike.McCarthy@Viega.us, (571) 328-1143

Based in the Northern Virginia D.C. Metro area, Mike formerly worked for a fire protection manufacturer and was a volunteer firefighter. Mike holds a Business Degree with a specialization in entrepreneurship and brings strategic business planning to the Viega team.

viega

VICE PRESIDENT MEMBERSHIP

Joey Adams

MAR NEW MEMBERS

MAR MEMBERS

Chad Comfort
Brock Frey
Alex Hammond
Adam McElhanev
Jacob Otto



Thank you to each and every member who encouraged a colleague to join the Hampton Roads ASPE Chapter this year. We had some growth and I am excited to continue and build on that growth in the 2022-2023 season! Be on the lookout for membership drive events in the Fall!

To continue our growth in the Chapter we would like to create this incentive. For every member that you get to join the Chapter you will earn a prize. For instance 1-2 members gets you an ASPE HR tumbler 3-4 gets you the tumbler and a HR t-shirt and for 5 or more you get the tumbler, HR T-shirt & padded folio. So please start getting your co-workers to sign up for the Chapter



Photo by Clark Nexsen



Ultra-reliable water heaters
built with AquaPLEX durability



AquaPLEX®
Engineered Duplex Alloy



800.784.8326 | pvi.com

Engineered, pre-assembled
water heating, water quality
and heat pump solutions



Lync®
by WATTS

817.335.9531 | lyncbywatts.com



1432 Front Ave | Lutherville, MD 21093
410-825-6616 | bayassociates.com | Eric@Bayassociates.com

Longevity, efficiency and reliability

Hubbell cement lined tanks last 2 to 3 times
longer than glass-lined tanks providing
a lower lifetime cost of ownership.

Ask about our heat pump water heaters,
the PBX and OMNI.



Contact our representative, Eric Geisendaffer
at Bay Associates to learn more!
eric@bayassociates.com



AYP LIAISON

Jacob Otto

**ASPE
YOUNG
PROFESSIONALS®**

ASPE AYP is always looking to grow our 35 and younger engineer network!

Please join us this season in support of your local ASPE Chapter as well as AYP for exciting and educational topics

**ASPE
YOUNG
PROFESSIONALS®**

**We would love to hear what sort of topics would interest you?
What meeting format is most beneficial to get the most out of
it? We want to hear from you!**

Jacob Otto

(804)822-0435

jacobotto@ottosales.com

ASPE Design Guide Volume 4 Chapter 4

“The goal of the designer should be for the system to operate with as little energy as possible for a given demand.”

“At no time is a booster at 100 percent flow based on Hunter’s diversity curves”

“When selecting the total flow capacity, one preferred way to evaluate the operational efficiency is to use a method that can be scientifically proven, such as the 70 percent method.”

“Tanks will typically be required when the manufacturer does not utilize low flow testing algorithms to detect low flow”

“New energy standards concede that reducing the speed of a pump during most of its operational time and restarting for makeup loads is more efficient than using tanks as “water storage batteries” during low-flow conditions.”

** The above is taken from American Society of Plumbing Engineers design guide volume 4 chapter 4**

Thank You for your support!



Your Trusted Partners

Please contact us for in person or virtual lunch & learn jayotto@ottosales.com 804-798-2600

QuantumFlo is an ASPE Accredited CEU provider

QuantumFlo received the 2020 ASPE Industry Award

VICE PRESIDENT LEGISLATIVE

Marc Bedois

CODES & STANDARDS

CSA Seeks Comments on Nonpotable Water Reuse Systems Standard

CSA Group is pleased to announce that CSA B128.3: Performance of Nonpotable Water Reuse Systems is available for public review. CSA B128.3 assesses the performance of package wastewater treatment plants that are intended to treat either mixed-wastewater or graywater drainage to produce a treated effluent water quality suitable for nonpotable water-reuse applications with a treatment capacity of up to 10 000 L/d (2,650 gpd) or less. It also covers site-assembled components included in package wastewater treatment plants.....[more](#)

New ASTM International Standard Covers Sediment for Stormwater Testing

ASTM International's stormwater control measures committee (E64) has developed a new standard on the characteristics of sediments used in laboratory performance testing of stormwater treatment devices.

The new standard, soon to be published as E3317, describes the minerology, specific gravity, and particle size distributions (PSDs) of silica-based sediments used in the testing of these devices. According to ASTM International member Jay Holtz, using a standard sediment during performance testing helps provide consistent and comparable results.....[more](#)

IAPMO Seeks Technical Committee Members for the 2027 UPC and UMC

The International Association of Plumbing and Mechanical Officials (IAPMO®) is seeking volunteers to participate on two technical committees working toward the development of the 2027 editions of the Uniform Plumbing Code (UPC) and Uniform Mechanical Code (UMC). The deadline to submit an application is January 31, 2023.

Within these documents, prospective technical committee participants may find information on the scope and general guidelines for the conduct of these committees.

The provisions of these codes apply to the erection, installation, alteration, repair, relocation, replacement, addition to, and use or maintenance of plumbing and mechanical systems.....[More](#)

Credential of Learning Achievement on Code Official Safety Is Launched





The International Code Council recently launched its first credential dedicated to the safety of code official personnel. The Code Official Safety Credential of Learning Achievement (CLA), developed in collaboration with the Code Enforcement Officer Safety Foundation (CEOSF), will educate code officials and inspectors in all disciplines with officer safety skills that set the standard in the code enforcement profession.

The Code Official Safety CLA assessment will be offered via the Code Council's Proctored Remote Online Testing Option (PRONTO), which will verify subject matter comprehension and competency. The Code Council's PRONTO examinations are available 24/7, scheduled up to 45 minutes in advance and utilize advanced exam security features.....[more](#)

International Code Council Releases New Revit Add-In to Help Streamline Design Workflows

The International Code Council has announced the release of the ICC Digital Codes Premium Revit® Add-In. The new add-in allows architects, designers, engineers, and building safety professionals to access and reference building codes and standards directly from within Autodesk Revit.....[more](#)

Manufacturers represented by RMI

	Advance Products and Systems www.apsonline.com		Homestead www.homesteadvalve.com
	AquaShield www.aquashieldenclosures.com		Jones Stephens www.jonesstephens.com
	BK Resources www.bk-resources.com		Niagara www.niagaracorp.com
	Blue Angel Pumps www.blueangelpumps.com		Normandy Products www.normandyproducts.com
	Pipe & Foundry www.charlottepipe.com		Santec www.santecfaucet.com
	General Wire www.drainbrain.com		JC Whitlam www.jcwhitlam.com
	Bathware www.hamiltonbathware.com Swan www.swanstone.com IMI www.imitoday.com		Zurn Spec Drain, Wilkins, Commercial Brass, PEX www.zurn.com Just Mfg www.justmfg.com

Richmond Office /
Warehouse
2533 Mechanicsville
Turnpike
Richmond, VA 23223
Phone: (804) 643-7355
Fax: (804) 643-7380
General Email:
rmissales@rmissales.com

Website:
www.rmissales.com

Northern Virginia
Warehouse
4750 Eisenhower Ave,
Suite 2
Alexandria, VA 22304



H₂O
*to go!*TM
INDOOR BOTTLE FILLER

**A DESIGN AS
REFRESHING
AS THE WATER
IT SERVES.**

BF12-BCD WITH A171
(Shown with optional
Bottle Counter Display-BCD)

Women of ASPE®



Sponsored by



Women of ASPE®

Dedicated to **engaging**, **retaining**,
and **advancing** women in the plumbing
design industry through:

- Mentoring programs
- Membership outreach
- Partnerships with industry-related associations
- Educational and leadership offerings

To join WOA, email rrodriguez@aspe.org
For more information, visit aspe.org





WILLOUGHBY

COUNT ON US.

PRODUCTS OF UNCOMMON QUALITY

Security



Healthcare

Behavioral



Commercial



Park & Rec.



Specify Willoughby:



AUTODESK
REVIT

Product
MasterSpec

Proudly represented by:

Otto Sales
P.O. Box 6005
Ashland, VA 23005
804-798-2600
www.ottosales.com



AFFILIATES CORNER

Pat McNally

I would like to welcome you all back to the in house meetings and let you all know we are offering our tabletops once again. So please reach out to Lisa Sprague to reserve your tabletops.

A. O. Smith Receives WAVE Water Stewardship Verification

A. O. Smith Corp., a global leader in water heating and water treatment products, announced that the company has received WAVE water stewardship verification, a process led by The Water Council and independently verified by SCS Global Services.

A. O. Smith is one of the first companies to pilot the program.

WAVE helps companies improve their water stewardship and is independently verified, which provides additional credibility and transparency to the process. SCS Global Services is an international leader in third-party sustainability verification. The program includes a six-step methodology for improving, reporting, and recognizing good corporate water stewardship by identifying water risks and opportunities within the company's organization.....[more](#)

Kohler Co. Names Samie Barr Chief Brand Officer

Kohler Co. is pleased to announce the appointment of Samie Barr as Chief Brand Officer. This role was created to fuel strategic acceleration and further elevate the KOHLER brand globally across a diverse set of dynamic businesses.

Barr will report to David Kohler, Chair and Chief Executive Officer, serve on the Kohler Leadership team, and partner with leaders across the business to deliver the company's mission of a higher level of gracious living for customers, brand partners, and associates. Barr will have responsibility for leading global creative, media, and digital capabilities and the global teams responsible for the brand experience.....[more](#)

Learn How to Get Rid of Hydrogen Sulfide: The "Rotten Eggs in My Water"

Do you dread turning on the hot water in your shower or sink? Does the smell of rotten eggs take over your house as soon as the water runs? Chances are, you are dealing with hydrogen sulfide.

Hydrogen sulfide is a poisonous gas that is formed by sulfur-reducing anaerobic bacteria. These bacteria feed on organics in groundwater, and trace elements of iron and magnesium can catalyze their growth and development. While the gas is rarely in high enough concentration to be a danger, it is certainly unpleasant. It can also damage your pipes, as it renders water slightly acidic, leading to corrosion in copper, lead, and steel piping. It can even ruin the ion-exchange media in water softeners.....[more](#)

Watts Water Technologies Named One of America's Most Responsible Companies 2023 by Newsweek

For the fourth consecutive year, Watts has been named one of America's Most Responsible Companies by Newsweek magazine.

The company is being recognized as one of the Top 500 most responsible companies from 2,000 of the largest U.S. firms, spanning 14 industries. Honorees were selected based on a detailed analysis of publicly available key performance indicators derived from corporate social responsibility and sustainability reports, as well as an independent survey of more than 13,000 U.S. residents.....[more](#)

Caleffi Introduces the Gold Standard Kit for Hydronic System Installers

An industry leader in hydronic system protection, Caleffi North America has introduced the Gold Standard Kit. This single-box solution targets installers who demand the best protection for the systems they design, install, and service. The Kit combines two product favorites that effectively eliminate three problems:

1. The DISCAL®, a high-efficiency air separator dedicated to removing the system culprit: 1) excessive oxygen resulting in the formation of corrosion
2. The DIRTMAG® PRO, a dirt separator with two magnetic fields and unique collision mesh design that captures troublesome 2) ferrous debris and separates 3) non-ferrous debris such as copper shavings, pipe tape, pipe sealant, and solder commonly found in hydronic systems

Hydronic systems are susceptible to degradation when air, dirt, and magnetic separation are not performed well. A-la-carte choices of separators can leave gaps in the protection of ECM circulators and high-efficiency heat exchangers. Caleffi provides contractors the best solution for all three protection categories with the Gold Standard Kit. Product configurations are available for immediate purchase in 1- and 1½-inch sweat and press connections.....[more](#)



SLOAN'S LATEST INNOVATIONS



Gravity Toilet

The NEW toilet from Sloan features Centriflo technology that delivers a more powerful flush. The sleek bowl design without rim holes provides a surge of water that makes a vigorous water cyclone that clears and cleans the bowl with every flush. Available in 1.1gpf, 1.28gpf, and 1.6gpf for ultra-high efficiency options. The 17" elongated rim is ADA-compliant, making it ideal for a wide range of applications. Get all the features of a one-piece look with the benefits of a two-piece toilet!



Optimix Faucet

Bring market-leading anti-scaled technology to any facility with the new line of Optimix faucets that are ASSE-1070 compliant! This faucet offers the industry's fastest, most effective anti-scald technology incorporated directly into the faucet spout, providing a safe water temperature for new or retrofit projects. The water is mixed as it passes through the spout of the faucet and can be set to the desired temperature to get comfortable, safe water every time.



Bluetooth Connected Products

Wirelessly monitor the health and status of your fixtures with Sloan's newest line of connected products. Easily generate and share diagnostic reports, quickly access product technical data, and simplify tracking through Bluetooth technology. Stay in control with the Sloan Connect App to adjust and configure the connected faucets and flushometers, all from a smartphone device. Existing fixtures can easily be updated with the Bluetooth Adapter, available for qualifying fixtures.

ADVERTISE WITH YOUR LOCAL CHAPTER

A SPECIAL THANK YOU TO EVERYONE WHO HAS PLACED ADS THIS SEASON.

NEWSLETTER AND WEBPAGE ADVERTISEMENT COSTS

FULL PAGE NEWSLETTER (PER SEASON)

ASPE MEMBER \$500.00

NON-ASPE MEMBER \$600.00

HALF PAGE NEWSLETTER (PER SEASON)

ASPE MEMBER \$325.00

NON-ASPE MEMBER \$400.00

TABLETOP COSTS

TABLETOPS - PER MEETING

ASPE MEMBER \$120.00

NON-ASPE MEMBER \$140.00

TABLETOPS - YEARLY (SEPT THRU JUNE)

ASPE MEMBER \$600.00

NON-ASPE MEMBER \$700.00

Advertising

Thank You!

ADVERTISING



Water Temperature Control Revolutionized



VIRTUAL STATUS CHECKS!

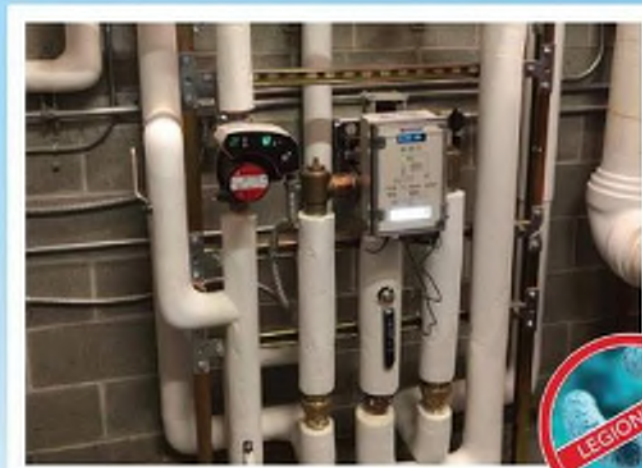
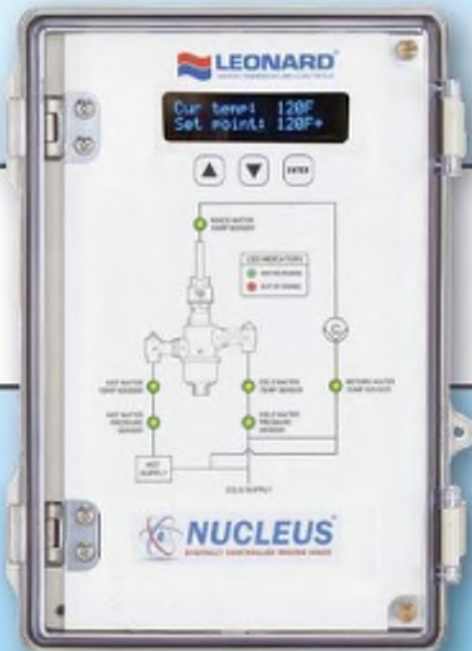
In these trying times when your staff is low, there is peace of mind with **Leonard's Self Diagnostic Digital Mixing Valves** – check from anywhere!

- ASSE 1017 Listed
- Easy Setup
- +/- 2 F Temperature Accuracy
- Daily Self Cleaning
- Self Balancing
- Disinfection Mode
- Six Standard Protocol Languages



NSF 372 COMPLIANT

Made in the USA with domestic and imported parts



Mixing safety and performance...
For over 100 years.

Proudly represented by:
Otto Sales
804-798-2600



A network of grey person icons connected by thin lines, set against a dark grey background.

What Is ASPE CONNECT?

A network of grey person icons connected by thin lines, set against a dark grey background.

HOW CAN YOU CONNECT?

connect.aspe.org

A collection of colorful question marks in various colors (blue, green, purple, yellow) scattered across a light grey background.

*Got a plumbing
design question?*

connect.aspe.org



THE FEATURES YOU NEED. A BRAND YOU CAN TRUST.

Whether you work in a hospital, manufacturing facility, office park or school, T&S has a plumbing product made specifically for you, with the features you need to do your job right.

With robust, sturdy and proven-reliable construction, you'll find that T&S is a brand you can trust.

So the next time you're looking for the right plumbing product, consider one from the manufacturer with a 70-year history: T&S Brass.



RELIABILITY BUILT IN™



Have you checked out ASPE Connect yet?

It's one of ASPE's greatest member benefits!

Our online community, ASPE Connect, is an invaluable resource to help you get expert advice and new insights on your design, career advancement, and product questions. And it's available only to ASPE members!

It's like having a brainstorming session with the world plumbing community.

- Paula Leatherman, CPD, FASPE

How to Get Started

1. Visit connect.aspe.org



2. **Sign in.** Your ASPE Connect login information is the same as your login for ASPE.org and ASPE Education. Once you are signed into one site, you are signed into all of them.



3. **Build your profile.** Help your fellow ASPE members get to know you by including a headshot, bio, education, and career history.



4. **Go to the Open Forum** and browse the discussions to add your thoughts to an ongoing conversation or start a new discussion.

Get Connected Today! connect.aspe.org

Maintenance Advantage®

Water Cooler by Murdock Manufacturing

Less is More.

Easy Maintenance + Fewer Parts = MORE SAVINGS!

- **Less Time:** Routine maintenance takes 2 minutes.
- **Less Maintenance:** Access water shut off, cartridge, and filter from the front without removing the shroud!
- **Less Expense:** Fewer parts to repair and less expensive parts.
- **Less Work:** Universal rough-in will match existing footprints for easy retrofit.
- **Water Shut Off:** Patented Auto Stop.
- **Premium Features at a Value Price.**
- Available with Bottle Filler

Barrier-Free, Wall Mount
Water Cooler with H2O
to go!® Deck Mount
Sensor Activated
Bottle Filler
A171408F-BF12-BCD



*Designed with Ease of
Maintenance in Mind!*

murdock
SINCE 1953

MURDOCK MANUFACTURING
Member of Morris Group International

P.O. Box 3527 • City of Industry, CA 91744-0527 U.S.A • Tel 800.453.7465
www.murdockmfg.com


**MORRIS GROUP
INTERNATIONAL**
www.morrisgroup.com

MidAtlantic
REPSOUTH

Bubba Rose

bubba.rose@midatlanticrepsouth.com

(804) 550-0025 Office

(804) 550-0074 Fax

(804) 837-3832 Cell

10261 Sycamore Drive, Ashland, VA 23005

www.midatlanticrepsouth.com

ASPE Mentoring Program



ASPE Mentoring Program

Connecting **ASPE members** who have a particular skill set with others who want to acquire the same skills to achieve their personal and professional goals.

Become a mentor or mentee today!

To learn more, visit
connect.aspe.org

 **ASPE**
American Society of
Plumbing Engineers

TALK AROUND THE WATER COOLER

Check-out these sites for interesting and educational topics & tools so you can stay in 'the know'!



ASPE PIPELINE

Some recent excerpts:

Three Benefits of Using Engineered Solutions to Support Water Heater Tanks

Engineered water heater supports improve the overall functionality and safety of the building and provide clients with a reliable solution

When designing a building, you'll often need to incorporate water heater accessories into your plan when installing a tank unit. You might need to mount the tank to a wall to save space, or to prevent fire incidents, you might need to raise the water heater off the floor....[more](#)

Legally, How Do the Responsibilities of Engineers and Designers Differ?

The vertical building market includes many different professionals—architects, engineers, designers, contractors, building officials, etc.—and we all have a place within the market. We also have some common interests: protecting the public's health, safety, and welfare, serving our clients' needs, and cooperating/coordinating with the design and construction teams as well as with the building officials.

MEP (mechanical, electrical, and plumbing) consultants have two major team members who work together to develop a client's concept: engineers and designers. In addition, the design team has the support of many other team members: administration, graphical presentation (Revit, AutoCAD, etc.), and field services. Generally speaking, the "M" works on the design of HVAC&R (heating, ventilating, air-conditioning, and refrigeration) and building automation systems that serve the environmental needs of the facility. The "E" works on the power, low-voltage, communication, fire alarm, and security system needs of the facility. The "P" works on the design of the plumbing and fire suppression systems (currently, most consulting firms do not have a separate fire protection discipline)....[more](#)

November 2022 Lessons in Firestop: Hambro Floor-Ceiling Assemblies and Mickey Mouse Ears

Hey there, firestop friends. I promised in the last Lessons in Firestop to talk to you about some of the issues with the Hambro floor-ceiling assemblies, or really any of the G500 series floor-ceiling assemblies. First, I want to be sure we are on the same page with what I mean by that. If you are standing on the floor looking down, it will look just like a typical concrete floor, but don't let that fool you because it is anything but that. If you are on one of these projects and you look up and see metal trusses, or at the top of the metal-framed walls you see rippers of drywall, those are two red flags that you should take a look at your plans—specifically the area that shows the floor assembly—before you start throwing firestop sealant in any holes.....[more](#)

Tankless Truth: Tankless Water Heaters Work Well with Cold Inlet Temperatures

With the benefits of high efficiency and fast recovery, tankless can provide businesses with the hot water they need no matter where they are in North America.

Wherever temperatures get below freezing, an often-preconceived notion is that tankless water heaters do not work well with cold groundwater temperatures. This is a prevalent misconception in northern states, such as Minnesota, Wisconsin, the Dakotas, etc. These biases have caused many buildings to be designed without consideration of tankless technology. However, by providing a design recommendation based on myth, MEP engineers could be missing out on the many benefits a tankless water heater could provide their clients.....[More](#)

November 2022 From the President's Keyboard: Does Your Chapter Have an Ambassador Program?

It's November, and we'll soon be into the holiday season. Most ASPE Chapters have resumed their monthly meetings and have held one or two technical sessions so far. I attended the October meeting for my hometown Atlanta Chapter, and while I saw many familiar faces, I was encouraged to see some new ones too. Those new faces are the future of ASPE. Missing at the meeting, however, were the virtual designers and engineers. That's the group we need to reach and get them to attend Chapter meetings, our Tech Symposium, and our Convention & Expo.....[More](#)

EDUCATION STATION

If you are looking to earn the required CEU's and/or enhance your skills and knowledge then this is the site for you! Once you've landed on Educational Program & Tools page, simply point & click to gain access to a variety of ways to accomplish your goals.

<https://www.aspe.org/pipeline/category/education-opportunities/>

ASHRAE Releases Its 2023 Winter Conference Technical Program

ASHRAE has released its technical program for the 2023 ASHRAE Winter Conference, being held February 4–8, 2023 in Atlanta at the Omni Hotel at CNN Center and Building A of the Georgia World Congress Center. The full conference schedule is available online and in the ASHRAE 365 app. Registration is open. [Click here to register now.](#)

"The conference will focus on addressing the critical challenges we all face in rapidly evolving industry and policy landscapes. It will feature papers and programs that are pertinent to the future of buildings and how they interact with people and the environment," said Christine Reinders-Caron, Chair of the committee for the conference. "Attendees will learn about the latest developments in building design and construction, from virtual design and simulation to decarbonization and grid resilience.".....[More](#)

ASPE's Next MedGas Workshop Will Be Held February 23–26, 2023

ASPE's popular MedGas Workshop is headed to the West Coast next year. It will be held in Irvine, California on February 23–26. Save the date if you plan to attend as registration will open soon.

What sets our workshop apart?

ASPE developed this workshop to fulfill the training requirements for the new ASSE 6060: Medical Gas Systems Designer professional certification. Attendees will enjoy all of the benefits of our 32-hour in-person workshop, which include:

- Personal interaction with our expert instructor, Mark Allen
- Team-based, hands-on activities
- Practical design exercises with calculation examples
- ASSE 6060 practice exam
- Copy of NFPA 99-2021: Health Care Facilities Code
- Quizzes to test knowledge retention
- Calculator and supplies for hands-on exercises
- Lunch, drinks, and snacks each day
- 1.2 ASPE CEUs
-

Those who complete the workshop will receive a certificate of training and will have fulfilled the training requirement to take the ASSE 6060 certification exam.....[More](#)